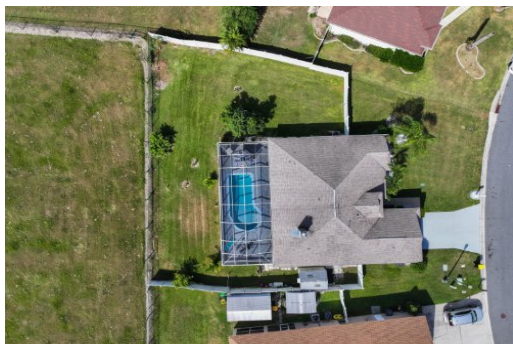


8167 Westmont Terrace Drive, Lakeland, FL 33810

For More Info Visit
tourdrops.com/dtour/356824



Brandon Ford
Sync Brokerage
305-305-0105
bfordcloses@gmail.com
www.brandonford.syncbrokerage.com



4 Beds | 2 Baths | 1696 Sqft
\$359,900

Your next home awaits you and your family here at Copper Ridge; where serenity and safety are your neighbors! Tax records will tell you the house is a near 1700sqft under air of living space, but it certainly feels bigger as you wonder past the entrance. The expansive 11,000+sqft borders a far AND wide open field to the rear of the backyard that gives the property a real country feel (even more so starring at the field laying in the well-placed hammock in the back patio). The estate features a large open living space in the center of the home w/ a wide open kitchen. The soaring ceilings lend to the property's overall spacing, irrigation system throughout the grounds, and a large pool complete with an impressively large screened in back patio! The master bedroom is large enough for any California master with furniture and the kitchen has pull up space for your barstool seats. Part of the house has been converted into a studio, but can be reconverted w/ relative ease (owners purchased th

Information provided is for consumer's personal, non-commercial use and may not be used for any purpose other than to identify prospective properties consumers may be interested in purchasing. Information is deemed reliable but not guaranteed.